



MONTHLY MEMBERSHIP PROGRESS REPORT

District 132

Results as of: 12/31/2016

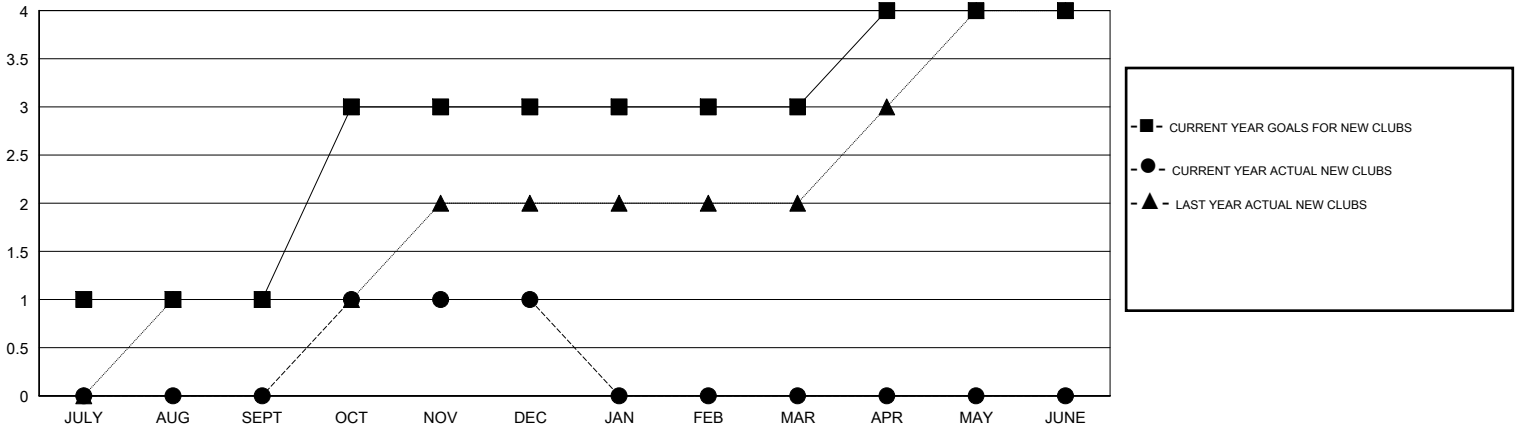
GMT: MIKLOS HORVATH

LOCATION MACEDONIA (FYROM)

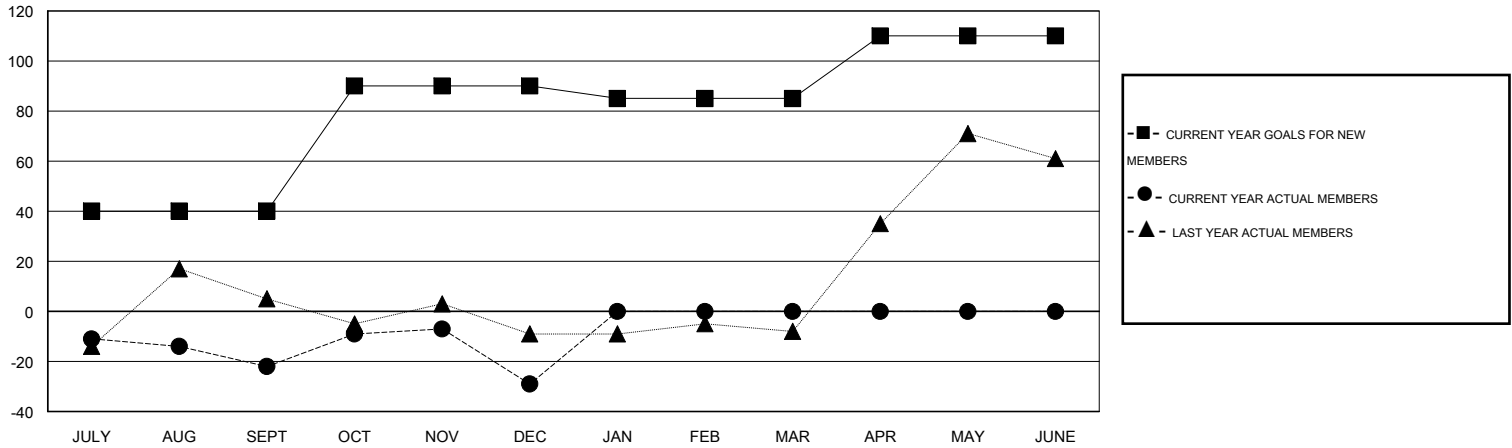
GMT CA 4

Clubs					Members				
RESULTS FOR 2016-2017					RESULTS FOR 2016-2017				
QUARTER	NEW CLUB GOAL	NEW CLUBS	DROPPED CLUBS	NET GAIN/LOSS	QUARTER	NEW MEMBER GOAL	CHARTER AND NEW MEMBERS ADDED	DROPPED MEMBERS	NET GAIN/LOSS
JULY/AUG/SEPT	1	0	0	0	JULY/AUG/SEPT	40	3	25	-22
OCT/NOV/DEC	2	1	1	0	OCT/NOV/DEC	50	47	54	-7
JAN/FEB/MAR	0	0	0	0	JAN/FEB/MAR	-5	0	0	0
APR/MAY/JUNE	1	0	0	0	APR/MAY/JUNE	25	0	0	0

GOALS AND ACTUAL NEW CLUBS CUMULATIVE



GOALS AND ACTUAL MEMBERS CUMULATIVE



DROPPED CLUBS: 1	15 CLUBS OF 38 ADDED 1 OR MORE NEW MEMBERS	GENDER DISTRIBUTION
		MALE 457 (56.70%)
		FEMALE 349 (43.30%)
DROPPED MEMBERS	CLICK HERE FOR HEALTH ASSESSMENT DATA	FAMILY UNIT MEMBERS 83
DECEASED 0		HEAD OF HOUSEHOLD 41
CLUB CANCELLED 5		NON-HEAD OF HOUSEHOLD 42
OTHER 74		
TOTAL 79		